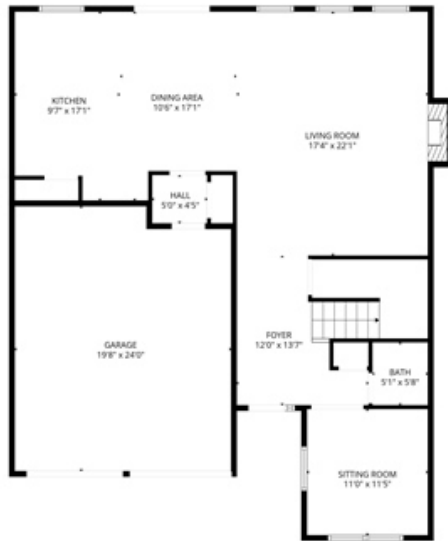


# Like new construction



FLOOR PLAN CREATED BY CURICASA APP. MEASUREMENTS DEEMED HIGHLY RELIABLE BUT NOT GUARANTEED.

\$ 680,000



1239 Penfield Lane, Charlottesville, VA 22901

- » Beds: 4 | Baths: 2 Full, 1 Half
- » Single Family | 2,416 ft<sup>2</sup>
- » Open floor plan
- » Proximity to trails
- » Large primary suite
- » More Info: [1239Penfield.IsForSale.com](http://1239Penfield.IsForSale.com)



Jordan Hague  
 (434) 964-7283  
[jhague@equity saverusa.com](mailto:jhague@equity saverusa.com)  
<http://www.EquitySaverUSA.com>



Old Dominion Realty and Investment LLC  
 T/A Equity Saver USA  
 2133 Hidden Knoll Drive Suite 1  
 Charlottesville, VA 22903  
 (434) 964-7283

Beautifully designed and energy-efficient, this like-new home in the sought-after Stonewater community of Charlottesville is perfectly suited for balancing work, life, and everything in between. Filled with natural light, the main level features gleaming hardwood floors and a functional, modern layout. A private flex space with glass French doors offers the ideal home office quiet, bright, and thoughtfully separated for productivity. The open-concept living area at the rear seamlessly connects the gourmet kitchen, dining space, and great room—perfect for entertaining or relaxing at home. The kitchen shines with white cabinetry, granite countertops, a large island, walk-in pantry, and stainless steel appliances. The adjoining great room features a cozy gas fireplace with a mounted TV space, creating a warm, inviting atmosphere. Upstairs, the spacious owner's suite provides a peaceful retreat, complete with a large walk-in closet and a spa-like ensuite bath designed for comfort and convenience. Large additional bedrooms and laundry located upstairs as well. Large crawl space spans entire footprint of the home offering impressive storage. Convenient to walking trails to Rivanna Trail, Pen Park & Meadowcreek Golf!

